

Dreaming BIG in Ol' El Paso

"Step in to "The Pass"



Senator Eliot Shapleigh
Texas State Senator Dist. 29
June 19, 2010



DREAM BIG!

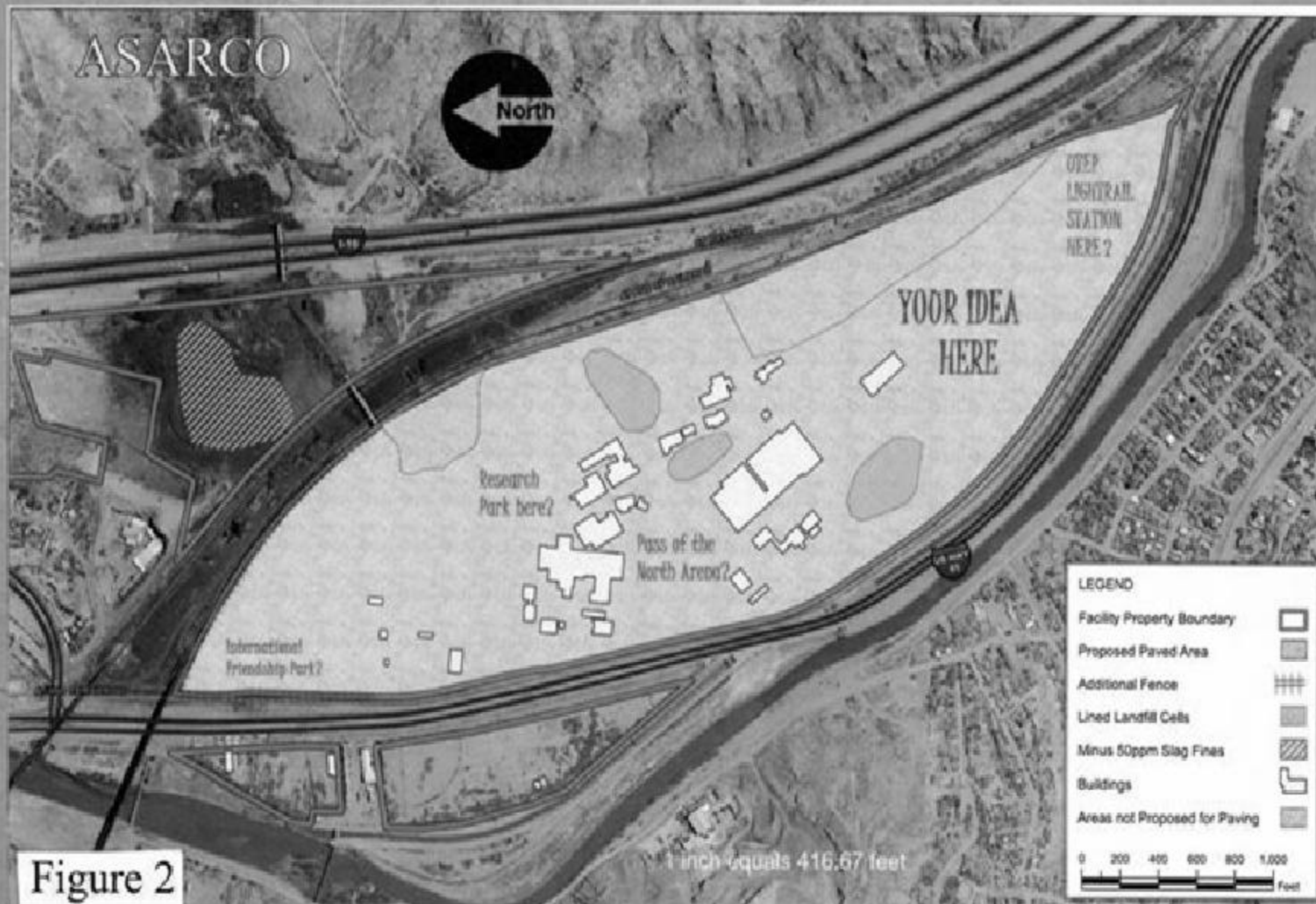


Figure 2

After view from Paisano Drive

After

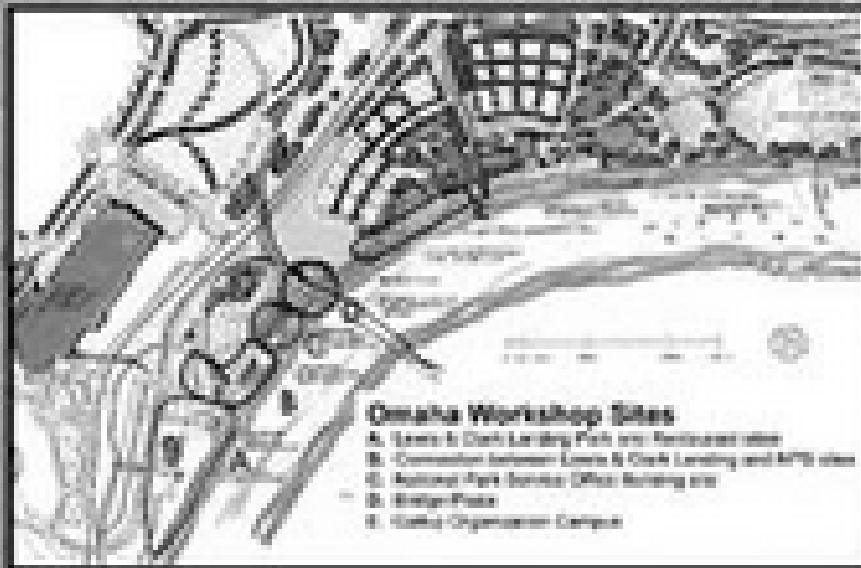


OMAHA, NE

Riverfront Redevelopment Plans

Redevelopment Plans Include:

- Light rail trolley system
- Grassy areas/parks
- "Labor Memorial"
- University amphitheater



Meet Hal Daub

- Mayor of Omaha 1995- 2001
- Took a vision made it happen
- Citizen's approved the plan
- Formed regional partnerships



***“If you can get everyone in the same room,
around the same table at the same time, you
can usually figure it out.”***

- Hal Daub



1998

1998





2010



***The Actual Site of the old ASARCO Plant
Now a Destination Eating, Entertainment Venue***

The Senator Bob Kerry, Pedestrian/Bike Bridge Over the Missouri River Into Iowa





Convention Center/Arena





ASARCO Labor Memorial



Lewis and Clark Landing



The Old Market District



**DREAM
BIG**

